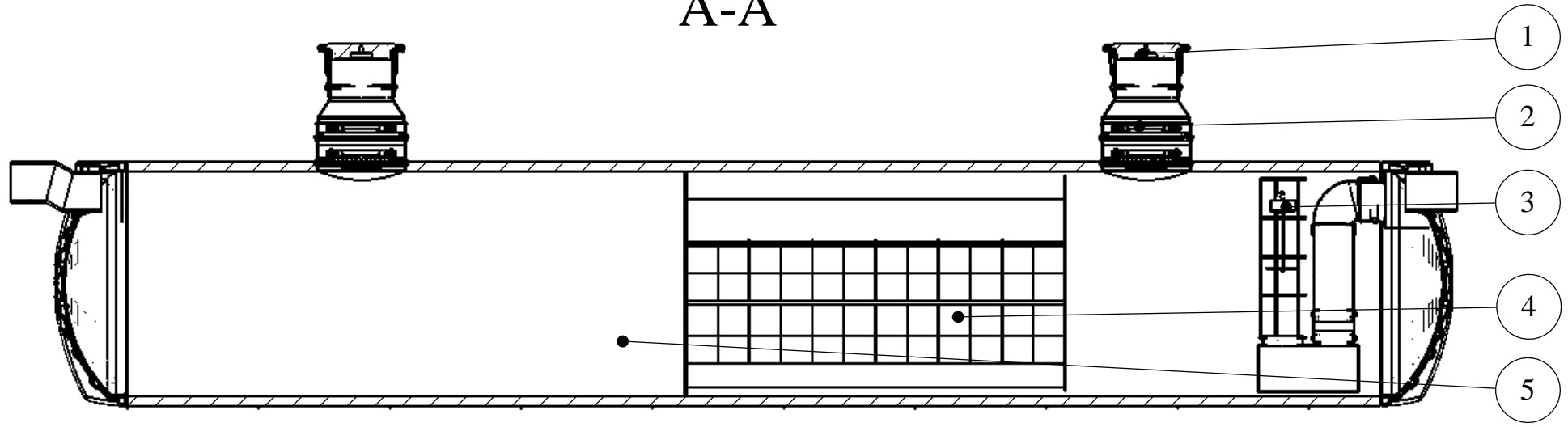



A-A



|   |   |
|---|---|
| 1 | Cover according to EN 124, class A35/B125/C250/D400 |
| 2 | Ladder  |
| 3 | Automatic closure                                   |
| 4 | Coalescing modules                                  |
| 5 | Sludge trap   |

|   |                                   |   |
|---|-----------------------------------|---|
| Product<br><b>NS</b>  | Name<br><b>SEPKO 100/20000</b>    | Scale<br><b>1:100</b>   |
| Design by<br><b>M.Skužinskas</b>  | Checked by<br><b>E.Mozūraitis</b> | Approved by<br><b>E.Kuodis</b>  |
|  <b>UAB ENEKA</b><br>Vandziogalos g. 94 LT-47467 Kaunas,<br>Lithuania<br>tel. +37037377441, faks.+37037377907<br>www.eneka.lt, info@eneka.lt |                                   | Drawing type<br><b>Customer drawing</b><br><br>Drawing no.<br><b>NS20-13-100BS</b><br>Date<br><b>2015-01-30</b> |
| Construction site   |                                   | Lang. <b>en</b> Sheet <b>1</b>  |